

www.pgr.com.tr

PGR[®]
DRIVE TECHNOLOGIES

| EN |

GENERAL PART LIST

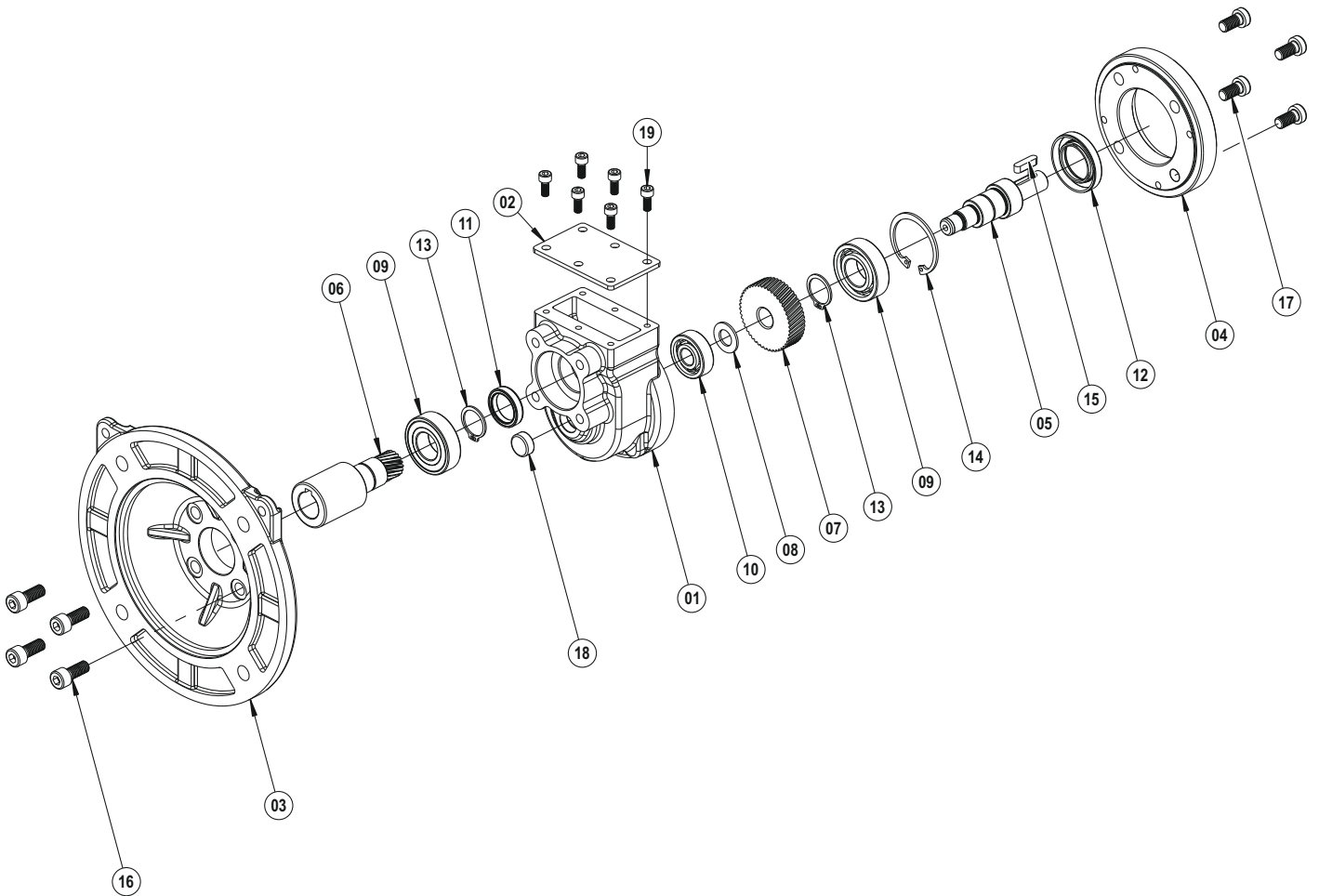
PX-PPC | SERIES

Gearmotors for Poultry Farms

We reserve the right to our company to make changes or modifications to catalogue without prior notice.

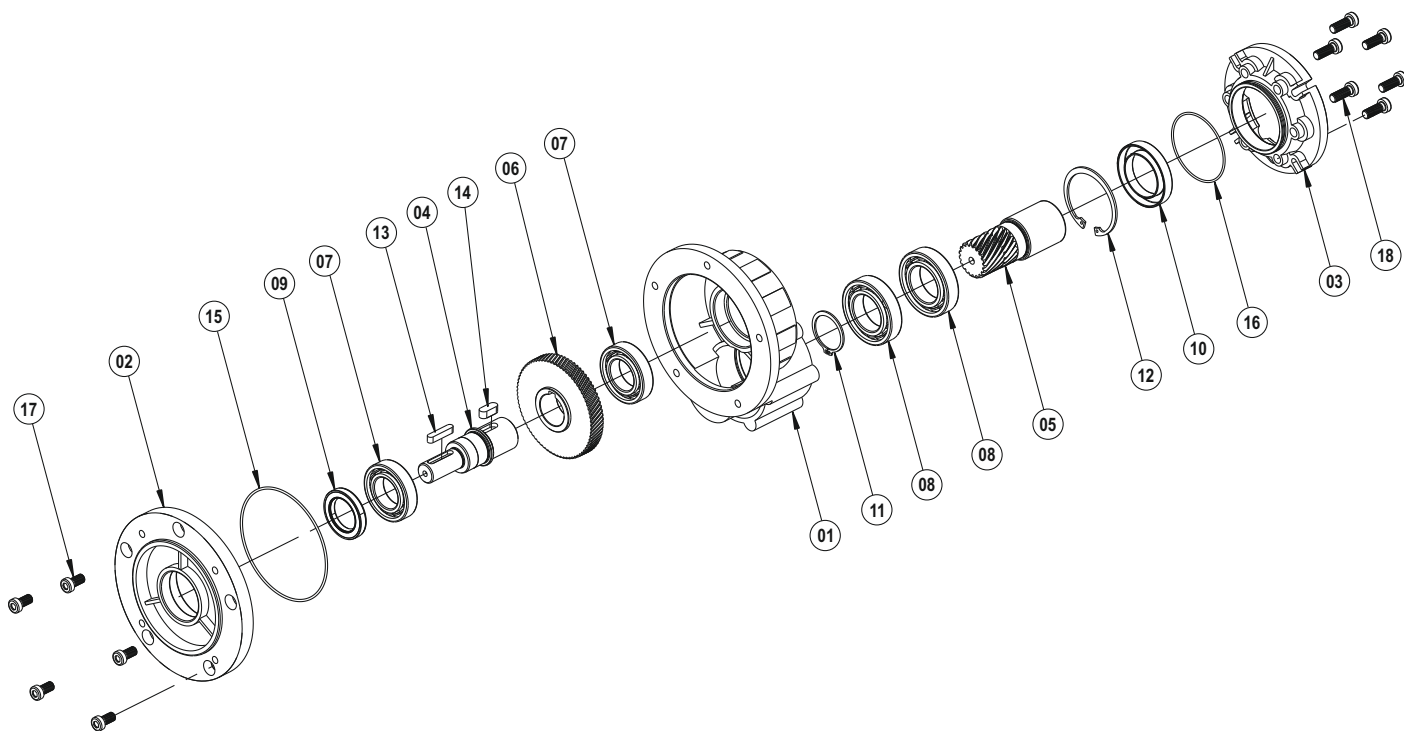
PGR[®]
DRIVE TECHNOLOGIES

PX



- 01 PX Gear Case
- 02 Cover
- 03 Input Flange
- 04 B5 Output Flange
- 05 Output Solid Shaft
- 06 PAM Shaft (With Gear)
- 07 Driving Gear
- 08 Washer
- 09 Bearing
- 10 Bearing
- 11 Oil Seal
- 12 Oil Seal
- 13 Circlip (DIN 471)
- 14 Circlip (DIN 472)
- 15 Key (DIN 6885)
- 16 Bolt (DIN 912)
- 17 Bolt (DIN 7984)
- 18 Oil Cover
- 19 Bolt (DIN 912)

PPC



- 01 PPC Gear Case
- 02 B5 Output Flange
- 03 Input Flange
- 04 Output Solid Shaft
- 05 PAM Shaft (With Gear)
- 06 Driving Gear
- 07 Bearing
- 08 Bearing
- 09 Oil Seal
- 10 Oil Seal
- 11 Circlip (DIN 471)
- 12 Circlip (DIN 472)
- 13 Key (DIN 6885)
- 14 Key (DIN 6885)
- 15 O-Ring
- 16 O-Ring
- 17 Bolt (DIN 7984)
- 18 Bolt (DIN 7984)



- Ata OSB Mah. Astim 1. Cad. No: 4, Pk 105 Efeler / Aydın / TÜRKİYE
- T: +90 256 231 19 12 - 16 (pbx)
- F: +90 256 231 19 17
- info@pgr.com.tr - satissonrasi@pgr.com.tr
- www.pgr.com.tr